



(219) 326-0014  
(800) 483-7700  
www.solidwastedistrict.com

Spring 2020

# "one man's trash..."

Solid Waste District of La Porte County

*Your guide to reducing, reusing, and recycling*

## Sign up today to Clean It Up!

This April and May, we need your help cleaning up La Porte County, and we will provide the supplies! Gather your friends or go out on your own and help us celebrate a cleaner and healthier community by pitching in to remove litter from your neighborhood, a county road, or the public space of your choice within the La Porte County Solid Waste District. Participants can choose any date in April or May that is convenient for them or their organization. Feel free to choose a day and place that have special meaning to you!

People and groups who sign up to participate in Clean It Up Day will receive both trash bags and blue recycling bags to fill, as well as bottled water to keep them hydrated while they work. The District will have work gloves and high-visibility vests available to lend to those who need them, as well.

Many La Porte County groups have already indicated their interest in the cleanup, including political and religious organizations, school clubs, Girl and Boy Scout troops, businesses, and families.

To sign up or to donate food or materials to this event, contact Sacha Gee-Burns at 219-326-0014 or sgeeburns@solidwastedistrict.com.

La Porte County Solid Waste District's Clean It Up program is part of the Great American Cleanup. The national nonprofit group Keep America Beautiful sponsors the Great American Cleanup each year, with over 15,000 communities participating in cleanup and community improvement activities nationwide. We are proudly celebrating our ninth year participating in this fun and worthwhile program.



## Turner Talks Trash from the Executive Director's Desk

Plastic packaging is hard to avoid. According to the EPA, more than 14 million tons of plastic containers and packaging were created in 2017 in the U.S. alone. From the thin plastic boxes that hold the strawberries or spinach you buy, to the difficult-to-open packaging surrounding scissors or nasal spray, as well as milk jugs and soda and shampoo bottles, it seems almost impossible to go to the store and avoid filling your cart with plastic packaging.

A lot of this packaging has a recycling number stamped onto the bottom, making people think that these items can be accepted for recycling. So, after those strawberries are eaten or that scissors package is finally opened, many of us have grown accustomed to tossing all of this plastic into the recycling bin.

Unfortunately, the recycling market is having a tough time right now, and just because an item is made of a potentially recyclable material does not mean that we can currently accept it for recycling. In La Porte County, we work hard to provide reasonably priced recycling services to our customers and find buyers for as many of the recyclables as possible. However, recycling is a business. It involves supply and demand; for now, it is just too costly to process all of the plastic you would like to recycle. So please take note of recent changes.

To make plastics recycling easy for everyone, we ask you to look at the SHAPES. **We accept plastics in the shape of bottles, jugs, tubs, and jars** in the blue curbside recycling totes and at drop-off locations. Plastic items in these shapes will usually have the number 1, 2, or 5. However, if you focus on the shape, you don't need to worry about the number. Plastic bags and wraps can be brought to the District office lobby or to special bins in grocery or home improvement stores for recycling. **All other shaped plastics should be thrown into the trash.** We will continue to work hard to increase plastic recycling in the future as the market allows and will keep you posted of any changes.

Thanks for your help!

*Clay*

WISE PEOPLE ADAPT THEMSELVES TO CIRCUMSTANCES AS  
WATER SHAPES ITSELF TO THE VESSEL THAT CONTAINS IT.  
~ ANONYMOUS



## Mark your calendar!

**5-in-1 Collection • Saturday, May 16, from 9 a.m. to 2 p.m.**  
**La Porte County Fairgrounds • 2581 W. State Road 2**

Accepting Tires, Appliances, Electronics, Confidential Papers for Shredding, and Household Hazardous Waste (household, lawn, and automotive chemicals and oil-based paints, as well as batteries, fluorescent bulbs, sharps, and medications)

**HHW Collection • Saturday, June 20, from 9 a.m. to 2 p.m.**  
**La Porte County Fairgrounds • 2581 W. State Road 2**

Accepting Household Hazardous Waste ONLY (household, lawn, and automotive chemicals and oil-based paints, as well as batteries, fluorescent bulbs, sharps, and medications)

For additional details, visit our website at [www.solidwastedistrict.com](http://www.solidwastedistrict.com).

## Recycle plastics by shape!

- **Recycle plastic bottles, jugs, tubs, and jars.** These SHAPES can all be sorted easily at our recycling separation facilities.
- **Plastic bags and wraps can be recycled in special bins at the District office and stores.**
- **Throw all other plastic items into the trash.** Plastic items that are NOT shaped like bottles, jugs, tubs, and jars — no matter what type of plastic or what number is imprinted on it — are not accepted for recycling.
- **Remember, recycle plastic by shape.** Drink cups, product packaging, loose lids, garden pots, and plastic clamshells are not accepted for recycling. Please place these into the trash.
- **All recycling should be empty, clean, and dry.**
- **Learn more** at [www.mydisposal.com/plastic-recycling-whats-in-a-number](http://www.mydisposal.com/plastic-recycling-whats-in-a-number)







Credit: XianXing | Getty Images

Solid Waste District of La Porte County

## MASTER RECYCLER PROGRAM 2020

Join this **FREE** class and become an advocate for recycling.

Classes begin May 20 and occur weekly on Wednesdays from 1:30 to 3:30 p.m. through June 24.

Sign up today by calling 219-326-0014 or emailing [sgeeburns@solidwastedistrict.com](mailto:sgeeburns@solidwastedistrict.com).

## LEGO® Replay makes it easy to donate LEGOs



Photo courtesy of LEGO

Spring is in the air, and it is time for deep cleaning and decluttering the house. Perhaps the kids got some new toys over the holidays and it's time to donate some of the old, unused toys that have been piling up. If you are clearing out LEGO or DUPLO blocks, consider donating them to kids in need using the free LEGO Replay program.

Donating with LEGO Replay is easy.

Just go to their website, [www.lego.com/en-us/campaigns/replay](http://www.lego.com/en-us/campaigns/replay), and print a free shipping label. You will need a shipping label for each box you want to donate. Box up your unwanted LEGOs and mail them off for free. The LEGOs go to a workshop in Alabama where employees sort, clean, dry, and package up the LEGOs so that needy kids can have the chance to build,



Credit: Geo-graffica | iStock | Getty Images Plus

## 7 Tips *for greener cleaning*

Spring brings longer days, warm breezes, and bright flowers. Leave winter's stuffy air and nasty cleaning chemicals behind and follow these tips to make this year's spring cleaning friendly toward the environment:

- 1 Think mechanical first. A scrub brush, a dish scrubber, and a retired toothbrush can provide a lot of cleaning power with no chemicals at all. Use drain baskets to keep drains free of debris that can lead to clogs.
- 2 Use up chemicals that you have on hand before purchasing more. If you have cleaners stored in multiple locations (some in the laundry room, others under the kitchen sink, and a few in the garage), find them and inventory what you have available.
- 3 Consider creating your own cleaners from common household products, such as vinegar, baking soda, salt, lemon juice, and mineral oil. Many of these cleaners are easy to make, effective, and less expensive than pre-mixed chemical solutions. Recipes for homemade cleaning supplies abound on the internet; search online to find the ones that work best for you. (Remember that even homemade cleaners can be irritating to skin and eyes. Always use caution in mixing, storing, and using homemade cleaners.)
- 4 If you choose to purchase a cleaning product, choose the mildest and most benign chemical product available. Don't use a sledgehammer when a fly swatter will do. Try to select products that provide complete information on ingredients, offer the clearest instructions, and don't require special safety measures for use or disposal. To help you identify these products, search the EPA's Safer Choice website at [www.epa.gov/saferchoice](http://www.epa.gov/saferchoice).
- 5 When you purchase products or containers, look for recycled-content and recyclable containers. Rather than using paper towels, choose reusable towels and old rags. If you purchase paper towels, opt for those made from recycled-content paper.
- 6 Buy concentrates to reduce packaging waste. Some cleaning products are now sold in concentrated form; you finish making the solution by adding tap water at home. Other products, such as laundry detergent, are concentrated and ready to use when you get home. Remember — if you have softened water, you can use less detergent.
- 7 Keep cleaning products in their original, labeled containers and dispose of them properly. Never pour potentially harmful chemicals into food or beverage containers for storage. Store all cleaning products out of reach of children and away from pets. Do not store potentially hazardous materials close to sources of heat or in direct sunlight. If you have questions about proper disposal of household hazardous waste, please call our office or visit our website.

invent, and play with them. Donated LEGO bricks are currently sent to two children's nonprofits in the United States, Teach for America and Boys & Girls Clubs of Boston, and the logistics are provided by Give Back Box.

LEGO has a long history of environmental responsibility, and the company has an entire division dedicated to assuring that their products, factories, stores, and shipping methods minimize the environmental impact of their toys. LEGO currently strives to use renewable energy and to create minimal waste in their factories and stores. The company has set a goal to use only sustainable materials in their products by 2030 and in their packaging by 2025. The LEGO Replay program is part of this larger effort to make sure that their toys have a very low environmental impact while reaching out to kids who might not have the opportunity to use them otherwise.

There are other ways to find a new home for your LEGOs. If you don't mind paying for shipping, you can donate your LEGO bricks to BrickDreams, a nonprofit group run by two boys in Folsom, California. LEGOs are collected and given to nearby kids in need. Visit [www.brickdreams.org](http://www.brickdreams.org) for details.

Like other toys, games, clothing, and household items, LEGOs cannot be recycled, but they can be donated to local charities like Goodwill or The Salvation Army. They can also be offered to schools or a local Boys & Girls Club or after-school program. LEGOs can also be sold or given away through online marketplaces, such as Nextdoor, Craigslist, Facebook Marketplace, or eBay.

Whether you sell or donate your unwanted LEGOs, finding them a new home will make both you and the new owners very happy, which might make it a bit easier to "LEGO" of them!



# The numbers are in!

La Porte County yearly recycling numbers are staying strong, and we would like to thank YOU for taking part in our programs. Keep up the good work!

Recycling Totals	2019	2018	2017	2016
Curbside Recycling	7,705.92 tons	7,951.78 tons	7,856.86 tons	7,824.46 tons
Household Hazardous Waste	46.6 tons	61.62 tons	58.86 tons	55.67 tons
HHW Households Served	1,936	1,822	2,552	1,907
Paper/Shredding Recycling	18.15 tons	15.3 tons	15.07 tons	19.06 tons
Yard Waste/Composting	4,681.98 tons	11,352.80 tons	5,188.31 tons	11,012.40 tons
Tire Recycling	117.95 tons	96.29 tons	38.35 tons	146.25 tons
Appliance Recycling	20.81 tons	14.25 tons	13.72 tons	16.59 tons
Electronics Recycling	216.39 tons	271.27 tons	277.19 tons	242.25 tons
Inkjet Cartridges/Phones/Books	\$41.99	\$144.93	\$253.85	\$326.68
TerraCycle Donations	\$134.78	\$243.45	\$222.93	\$50.97
Fair Week Recycling	1.75 tons	1.66 tons	1.93 tons	
Plastic Bag Recycling	126,927 bags	69,984 bags	21,303 bags	20,000 bags
Total Waste Diverted from Landfills	12,809.54 tons	19,763.31 tons	13,448.35 tons	19,316.68 tons

## Understanding the global garage sale

There is a diverse, multi-billion-dollar industry associated with the reuse of things that people once purchased but no longer want to possess. Some of us will hold the occasional garage sale or trade in a used car, and most of us will, on occasion, drop off unwanted items at a Goodwill store. But the full extent of the trade in used goods is invisible to us. In his entertaining book, *Secondhand: Travels in the New Global Garage Sale* (Bloomsbury USA, 320 pages), Adam Minter shines a light on the resourceful people who make a living getting things out of the hands of those who no longer want them and into the hands of those who do.

“Growing affluence across the developing world means that more and more consumers are opting for new stuff,” writes the author.

While Latin Americans may aspire to the consumer lifestyle of their neighbors to the north, many in Southeast Asia see Japan’s wealth and income as their goal. But, until they can afford new items, used goods bridge the gap. While Malaysia’s economy has been successful, per capita household income there remains less than one-third that of Japan. According to Minter: “As a result, many Malaysians buy secondhand if they have any hope of emulating the Japanese lifestyle.”

Though the book is well researched and full of data, Minter reveals the big picture narrative through the individual stories of a compelling cast of characters. Enter Jeongja Han, a 50-year-old retired flight attendant and director of a company that “specializes in cleaning out and disposing of the property accumulated by Japan’s shrinking population.” She is accredited in *shukatsu*, “the process of preparing for the end.” And, while she could simply price each job for labor, truck costs, and disposal fees to collect the material and deliver it to one of Japan’s high-tech incinerators, she says her clients “want to know that somebody is using their things. It makes them feel good.” So, she sells much of it to a 67-year-old man named Tetsuaki Muraoka, who ships it to the Philippines. Muraoka spent 20 years doing PC repair until smartphones ended that line of business. Minter recalls a discussion between Han and Muraoka that illustrates the constant change in the business: “‘The Filipino market



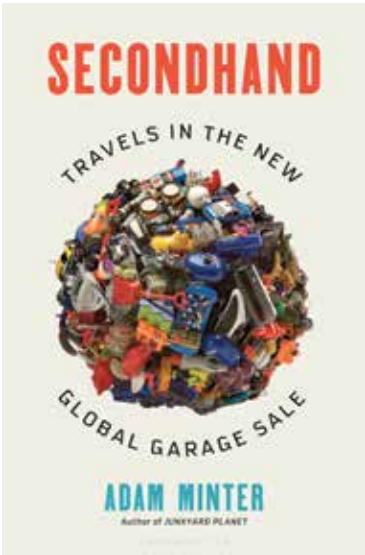
© Christine and Steve Tan

won’t last forever,’ she tells him. ‘As the wealth level goes up, they’ll want new things. Then what?’ It’s happened before — Thailand was once Japan’s favored destination for its used stuff. But that market has faded with Thailand’s increasing wealth. ‘Cambodia, probably,’ Han surmises.”

Across the globe in Arizona, Mike Mellors, a 57-year-old Goodwill attendant, tells Minter, “Goodwill is where Tucson’s garage salers unload things they can’t sell and don’t want to keep. It’s a weekly phenomenon boosted by the comings and goings of Tucson’s military families and retirees. When they arrive, they need things; later, they realize they can’t take it all with them.” The best of these donated items will stock the shelves of a Goodwill store, looking for a buyer. After six weeks of discounting there, about a third will sell. Remaining unsold items are moved to a Goodwill Outlet Center and sold by the pound, where “80 to 90% of the customers are Mexicans purchasing goods bound for resale over the border.” Only 12% of the items received at the outlet center sell there. Much of what is sold at garage sales, regular Goodwill stores, and the Goodwill Outlet Center enters the “Southwestern version of Japan’s trade with Southeast Asia... a trade conducted by small-business people who, pickup by pickup, evacuate the unwanted stuff generated across the Southwestern United States to Mexico’s up-and-coming consumers.”

One of those small-business people is “Shoe Guy,” a 41-year-old Mexican who logs 50,000 miles a year traveling between Tucson’s 16 Goodwill stores and Nogales, Mexico. “At Goodwill Industries of Southern Arizona, he’s considered a big buyer (which is saying something). On the other side of the border, he has a network of seven wholesale buyers, some of whom take as many as 100 pairs of shoes at a time,” writes Minter.

Anna and her sister are also players in this market. They buy goods daily from the Goodwill Outlet Store and warehouse them in their four-bedroom Tucson home. When they have a full load, they travel south to their hometown of Hermosillo, Mexico to re-stock their mother’s secondhand store. Business has been good, but according to the sisters, “the quality of clothes is going down. Used to be it’d take two or three days work and



## Drop off yard waste for free

La Porte County residents can drop off yard waste at no charge at the Compost Facility, located north of the Fairgrounds, across from NIPSCO, at 724 Zigler Road in La Porte. Businesses may also drop off yard waste but will be charged a tipping fee. Green waste drop-off days and times vary by season, so please visit our website at [www.solidwastedistrict.com](http://www.solidwastedistrict.com) or call 219-363-8962 for current details.

Drop off your grass clippings, brush, and logs and we will work our magic and transform them into nutrient-rich compost and useful mulch. If you collect your yard waste in the large paper yard waste bags available from home improvement stores, they do not need to be emptied because the PAPER bags are compostable. However, you must empty all plastic bags or bins that you use to haul your leaves or clippings and take the bags and containers home to reuse or dispose. Leave only yard waste, please. Please follow all signs at the facility. NO trash is accepted at this facility.

All loads will be inspected before you are allowed to drop off your yard waste. When available, residents can purchase and self-haul compost and natural mulch at \$11 per cubic yard.

Call Vince Sherman at 219-363-8962 with any questions.

## Questions about curbside yard waste pickup?

La Porte residents – Contact the La Porte City Street Department at 219-362-2477.

Michigan City residents – Contact Michigan City Central Services at 219-873-1530.

we’d have a load to send home. Now it takes six days to find the same amount of stuff.”

Goodwill will send much of what doesn’t sell at the stores or outlets to the landfill. Textiles, however, are compressed into 500-pound bales and sold into the “salvage,” or export, market. Some go directly to traders in Pakistan, India, or West Africa. However, about one-third of the used clothing from the U.S. and Canada is sorted, priced, and shipped by “graders” operating from Mississauga, Ontario.

A recurring theme is the desire of more markets to move from quality secondhand goods to new goods of any quality. To counter this disruption, Minter argues, “Simple, voluntary steps by manufacturers and consumers to encourage the production of more durable and repairable goods could go a long way toward ensuring that secondhand thrives and grows for decades to come.”

“The most intractable barriers are prejudices that inhibit people in wealthy countries from selling and shipping their unwanted stuff to people in developing countries,” he writes. “There is no secondhand economy that excludes the developing world, and consumers in the wealthy, developed world need to embrace that reality.”

# Curbside Recycling Schedule

- A

City of La Porte – South of Hwy. 2 and West of Monroe (Hwy. 4); North of Hwy. 2 and West of Hwy. 35
- B

City of La Porte – East of Hwy. 4 and South of Hwy. 2, including Kankakee Township; East of Hwy. 35 and North of Hwy. 2 to Brighton Street
- C

City of La Porte – East of Hwy. 35 and North of Brighton Street; Town of Westville; New Durham Estates Mobile Home Community; Cass Township; Dewey Township; Hanna Township; Prairie Township
- D

Clinton Township; Noble Township; Scipio Township; Town of Wanatah
- E

Johnson Township; Lincoln Township; Pleasant Township; Union Township; Washington Township
- F

Michigan City – South of 12, South of MLK Drive, West of Karwick Road; Pottawattamie Park; Village Green
- G

Michigan City – North of 12, North of MLK Drive, East of Karwick Road; Springfield Township; Long Beach; Michiana Shores; Shoreland Hills; Beach Walk; Green Acres; Sheridan Beach
- H

Coolspring Township; New Durham Township (excluding the Town of Westville and New Durham Estates); Weatherstone Village; Terrace Acres
- I

Center Township (outside city limits)
- J

Galena Township; Hudson Township; Wills Township; Trail Creek (Michigan City); Rolling Prairie Mobile Home Park

Recycle Toter Reminders:

Place at curb by 6 a.m. of pickup day.

Locate toter at least 4 feet from items such as mailboxes, trees, or parked vehicles.

If recycling pickup is missed, please call 219-326-0014 within 24 hours. We will get a truck back out to you!

**NOTE:** Township is outside of City limits. Never remove toter from assigned address.

April						
Sun.	Mon.	Tues.	Weds.	Thurs.	Fri.	Sat.
			1	2	3	4
			C	D	E	
5	6	7	8	9	10	11
	F	G	H	I	J	
12	13	14	15	16	17	18
	A	B	C	D	E	
19	20	21	22	23	24	25
	F	G	H	I	J	
26	27	28	29	30		
	A	B	C	D		

May						
Sun.	Mon.	Tues.	Weds.	Thurs.	Fri.	Sat.
					1	2
					E	
3	4	5	6	7	8	9
	F	G	H	I	J	
10	11	12	13	14	15	16
	A	B	C	D	E	
17	18	19	20	21	22	23
	F	G	H	I	J	
24	25	26	27	28	29	30
	Holiday No Service	A	B	C	D	E

June						
Sun.	Mon.	Tues.	Weds.	Thurs.	Fri.	Sat.
31	1	2	3	4	5	6
	F	G	H	I	J	
7	8	9	10	11	12	13
	A	B	C	D	E	
14	15	16	17	18	19	20
	F	G	H	I	J	
21	22	23	24	25	26	27
	A	B	C	D	E	
28	29	30				
	F	G				



LAPORTE COUNTY  
**RECYCLING**  
Solid Waste District

District Board Members

Mayor Tom Dermody – Chair

Commissioner Rich Mrozinski – Vice Chair

Commissioner Dr. Vidya Kora

Commissioner Sheila Matias

Councilman Mike Mollenhauer

Mayor Duane Parry

Councilman Don Przybylinski

Citizen’s Advisory Committee

Justin Kiel – Chair

Jennifer Olson – Vice Chair

Amy Feikes – Secretary

Paul Brooks

Juli Charlesworth

Jim Irwin

Jim Micheals

Dick Reel

Staff

Clay Turner, Executive Director

Robin Havens, Office Manager

Lisa Woodson, Recycling Coordinator

Sacha Gee-Burns, Environmental Educator and Public Outreach Coordinator

Lyn DeGroote, Controller

Scott Lynn, Program Coordinator

Vincent Sherman, Compost Site Project Coordinator

Ryan Kiel, Public Site Coordinator



[www.facebook.com/LPCoRecycling](https://www.facebook.com/LPCoRecycling)  
[www.twitter.com/LPCoRecycling](https://www.twitter.com/LPCoRecycling)  
[www.youtube.com/LPCoRecycling](https://www.youtube.com/LPCoRecycling)  
[www.lpcorecycling.tumblr.com](https://www.lpcorecycling.tumblr.com)  
Green E-Club: <http://eepurl.com/eiyHs>

# Library hosts free Earth Day Extravaganza!

Looking to celebrate Earth Day’s 50th anniversary? The Michigan City Public Library at 100 E. 4th Street invites La Porte County residents of all ages to join together to celebrate the Earth at their FREE Earth Day Extravaganza on Saturday, April 25, from 1 to 5 p.m.



Credit: bubble86 | iStock | Getty Images Plus

Enjoy free kids’ arts and crafts activities, find books about ways to care for our planet, and get information from local eco-friendly groups, such as the Solid Waste District, Save the Dunes, Dunes Learning Center, Dunes National Park, and MANY more! Contact the library for more details and information. See you there!

# Recycle anything with a plug at our two electronics recycling locations

Do you have broken or older electronic devices which you no longer need? If it plugs into the wall or runs on a battery, it doesn’t belong in your trash! Electronics contain several types of recyclable materials which are useful in making new electronics and which could contaminate soil and groundwater if disposed in landfills. For this reason, it is a crime in Indiana to place electronics, such as televisions, computers, game controllers, tablets, smartphones, and similar items, into the trash.



Credit: Geo-graffika | iStock | Getty Images Plus

We have made it easy for you to dispose of your unwanted electronics with our two Electronics Recycling drop-off locations for FREE recycling year-round! Here are the locations and hours:

- 2857 W. State Road 2, La Porte  
Open Monday–Friday, 8 a.m.–4 p.m.
- 1027 Hitchcock Road, Michigan City  
Open Monday–Friday, 7 a.m.–3 p.m.

We also accept electronics at our 5-in-1 Collections at the La Porte County Fairgrounds. This year’s events will be held on May 16 and September 19.

Visit [www.solidwastedistrict.com/electronic-recycling](http://www.solidwastedistrict.com/electronic-recycling) or call 219-326-0014 for more information.

We want your suggestions, questions, and comments!

Solid Waste District of La Porte County

2857 W. State Road 2

La Porte, IN 46350

(219) 326-0014 • (800) 483-7700

[www.solidwastedistrict.com](http://www.solidwastedistrict.com)

Copyright© 2020

The Solid Waste District of La Porte County and Eco Partners, Inc.

All rights reserved.



PLEASE RECYCLE AFTER READING.